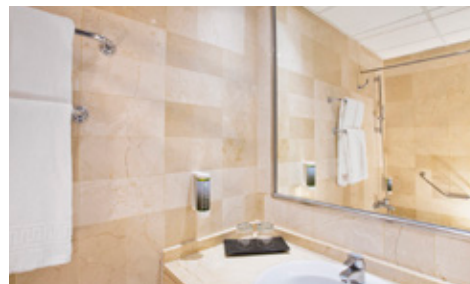
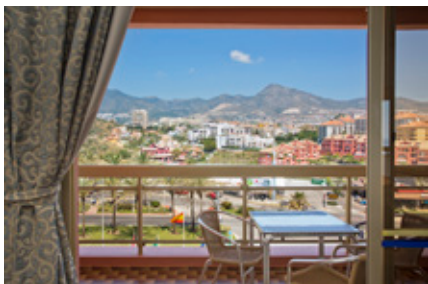
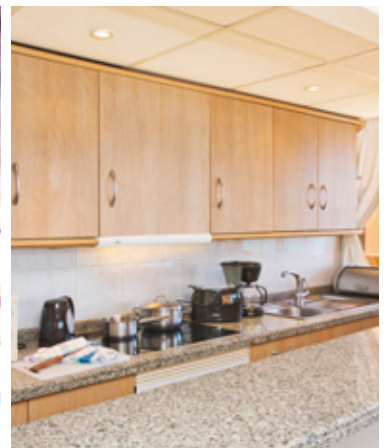
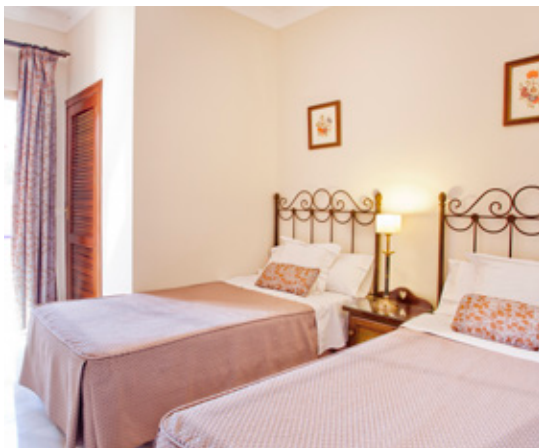


## 2 Bedroom Apartments

(Mountain views)



- 2 Bedrooms (one with either a double bed or 2 single beds, and one with 2 single beds)
- Lounge/diner with twin sofa bed
- Fully equipped kitchen - incl. kettle, oven, hob (4), microwave, fridge, toaster, coffee maker, cooking utensils, crockery & cutlery for 6 persons (kitchen can be open-plan or separate)
- 2 Bathrooms with bath / shower with hairdryer
- Iron & ironing board
- Terrace with table & chairs
- Max. occupancy 6 persons (recommended maximum adults = 5)
- TV with international channels
- Air-conditioning/heating
- Large closet
- Safe
- Direct dial telephone
- Daily cleaning (except kitchen) & towel change
- Change of linen twice / week
- Free Wi-fi
- **Mountain view**
- Arrival/Departure day and minimum stay restrictions may apply



*This sheet is for information purposes only. Exact layout and decoration of apartments may vary. Most apartments can fit a cot in addition to the maximum occupancy mentioned above.*